

The International Friendship All Japan Junior Yacht Club Regatta 2023 Sailing Instructions (SI)

The notation '[DP]' in the SI means that the penalty for a breach of that rule may be less than disqualification at the discretion of the protest committee.

The notation '[NP]' in the SI means that a violation of this rule is not grounds for protest by a boat. This changes Rule 60.1(a).

1. Rules

- 1.1 The regatta will be governed by the rules as defined in the Racing Rules of Sailing 2021-2024 (hereafter as rule).
- 1.2 Appendix T will apply. A boat that has fulfilled "A Post-Race Penalty" is recorded as "ARB". This changes Appendix A10.
- 1.3 If there is a conflict between languages, the English text will take precedence.

2. Notices to competitors

- 2.1 Notices and communications to competitors will be made via "Regatta LINE Open Chat" (hereafter as "LINE"). The check-out/check-in should be made at the race office. Minimum one competitor per one boat is requested to participate.



- 2.2 Participants of the regatta are requested to participate in LINE by the day before the regatta.
- 2.3 LINE will be used for the transmission from the race committee and the contact for departure/arrival of boats.
- 2.4 Profile Name for LINE will be Sail Number/Full Name for competitor and Club Name/Full Name for supporter.
(Example: Competitor as JPN 1/Taro Kanto, Supporter as Wakasu Junior/Jiro Kanagawa)
- 2.5 Any questions will not be accepted. (Posted text will be deleted.)

3. Changes to Sailing Instructions

Any changes to Sailing Instructions (hereafter as SI) will be made via "LINE" 60 minutes before the time of the warning signal on the day when it will take place, except that any changes to the schedule of the races will be made via "LINE" before 18:00 on the previous day when it will take place.

4. Signals made ashore

- 4.1 Signals made ashore will be displayed at the flagpole located at the race office.
- 4.2 D flag with one sound means 'The warning signal will be made not less than 30 minutes after D flag is displayed in Racing Area A, but not less than 10 minutes in Racing Area B. Boats shall not be moved from the designated location on shore until this signal is made. [DP]'
- 4.3 AP flag will not be displayed for each race of each class as stated in SI 5.1.
When D flag is not displayed no later than 30 minutes of the time of the warning signal, the start of the race is postponed indefinitely. In Racing Area A, when D flag is displayed above the class flag, that signal is applied only for that class.

5. Schedule of races

- 5.1 The warning signal of each class is as follows.

July 22nd (Saturday)

Racing Area A		Racing Area B	
Time	Class	Time	Class
9:25	ILCA 4 The 1st Race	9:25	Optimist Dinghy Beginners' Class
9:35	Optimist Dinghy Advanced Class The 1st Race		The 1st Race
The 2nd to 5th Races will be made continuously.		Races will be made continuously.	

July 23rd (Sunday)

Racing Area A		Racing Area B	
Time	Class	Time	Class
9:25	ILCA 4 The 1st Race of the day	9:25	Optimist Dinghy Beginners' Class
9:35	Optimist Dinghy Advanced Class The 1st Race of the day		The 1st Race of the day
The 2nd Race of the day will be made continuously.		Races of the day will be made continuously.	

- 5.2 On July 22nd (Saturday), Maximum five (5) races are planned for all classes.
However, in case planned all races are not completed because of the weather conditions or other reasons, the next race will be made on the following day.
- 5.3 When the following race is intended to be held, the race committee signal boat will display orange flag of the starting line with one sound to alert the boats at least 4 minutes before the warning signal is displayed.
- 5.4 No warning signal will be made after 12:00 on July 23rd (Sunday), the last day of the regatta.

6. Class flags

Class	Class flag
ILCA4	ILCA 4 flag (Yellow)
Optimist Dinghy Advanced Class	Optimist Dinghy Class flag (Blue)
Optimist Dinghy Beginners' Class	Optimist Dinghy Class flag (Red)

7. Racing area

Diagram-1 shows Racing Area A(ILCA4 · Optimist Dinghy Advanced Class) and B(Optimist Dinghy Beginners' Class).

8. The course

- 8.1 Diagram-2 shows the course to be sailed which includes approximate angles between the legs, the sequence of the rounding marks and the side of rounding each mark.
- 8.2 In Racing Area A, no later than the warning signal, the race committee signal boat will display the approximate compass bearing of the first leg.

9. Marks

- 9.1 Mark 1, 2 and 3 are as follows.

	Racing area A			Racing area B		
	Outside Color	Shape	Indication	Outside Color	Shape	Indication
Mark 1	yellow	cone	no number	yellow	slender cylindrical	Blue belt
Mark 2	yellow	cone	no number	yellow	slender cylindrical	No belt
Mark 3s,3p	yellow	cone	no number	yellow	slender cylindrical	Red belt

- 9.2 Starting Marks are as follows.

Racing Area A: The race committee boat at the starboard end of the starting line and “race committee boat” at the port end for Optimist Dinghy Advanced Class, however “yellow-green cone inflated buoy” at the port end for ILCA4.

Racing Area B: The race committee boat at the starboard end of the starting line and “the orange cylindrical inflated buoy” at the port end.

- 9.3 Finishing Marks are as follows.

Racing Area A: The race committee boat with a blue flag at the starboard end of the finishing line and “the orange trigonal pyramid inflated buoy” at the port end.

Racing Area B: The race committee boat with a blue flag at the port end of the finishing line and “the orange cylindrical inflated buoy” at the port end.

- 9.4 When the new mark is used in accordance with SI11, “the orange cylindrical inflated buoy” will be used.

10. The start

- 10.1 The starting line will be between the staffs on the starting marks displaying an orange flag on the course sides.
- 10.2 A boat starting later than 4 minutes after the starting signal will be scored as DNS (Did Not Start) without hearing. This changes Appendix A4.
- 10.3 [DP] Boats whose warning signal has not been made shall keep about 50 meters away from the starting area outside of the course during the starting sequence for other races and shall keep clear of boats whose warning signal has been made.

11. Changing the next leg of the course

To change the next leg of the course in Racing Area A, the race committee will lay a new mark and remove the original mark as soon as possible. When in a subsequent change a new mark is replaced, it will be

replaced by an original mark. In Racing Area B, no change of the leg of the course will be made after the preparatory signal. This changes RRS33.

12. The finish

The finishing line will be between the staff displaying a blue flag on the finishing mark and the finishing mark at the other side end on the course side.

13. Penalty system

13.1 Appendix P will apply for the breach of rule 42.

13.2 Appendix P2.3 will not apply and Appendix P2.2 is changed so that it will apply to any penalty after the second one.

14. Time limits and the target times

14.1 Time limits of the first finishing boat and the target times are as follows.

Class	Mark 1 time limit	Target time
ILCA4	15 minutes	45 minutes
Optimist Dinghy Advanced Class	20 minutes	45 minutes
Optimist Dinghy Beginners' Class	5 minutes	10 minutes

14.2 If no boat has passed Mark 1 within Mark 1 time limit, the race will be abandoned.

Failure to meet the target time will not be the ground for redress.

This changes rule 62.1(a).

14.3 Boats, failing to finish within 15 minutes in Racing Area A (10 minutes in Racing Area B) after the first boat of each class started without breaching rule 30.3 & 30.4 sailed the course and finished, will be scored as DNF (Did Not Finish) without a hearing. This changes rules 35, Appendix A4 & Appendix A5.

15. Shortening or abandonment after the start

The race committee may shorten the course or abandon the race based on rule 32 and in addition to the above reason, if they consider that the race will not complete within the above SI 14.1, the race time limits of the first finishing boat. This changes rule 32.1.

16. Protests and requests for redress

16.1 Protest forms are available at the race office. Protests and requests for redress or reopening shall be delivered to the protest committee within the appropriate time limit.

16.2 The protest time limit will be 60 minutes after the time when the last boat of each class has finished the last race of the day or the time when the race committee has signaled that there would have no more race on that day, whichever is later.

However, the protest committee chairman may extend the protest time limit. It will be notified via "LINE".

- 16.3 Notices of protest by the race committee or the protest committee will be made via "LINE" to inform competitors of hearings in which they are parties or named as witnesses within 15 minutes after the protest time limit to let them know about hearings.
Hearings will be held in the protest room located on the 2nd floor of the race office as from the time noticed.
- 16.4 Notices of protests by the race committee or the protest committee will be made via "LINE" to inform boats under rule 61.1(b).
- 16.5 A list of boats that have been penalized under SI 13.1 for breaching rule 42 will be made via "LINE" before the protest time limit.
- 16.6 A request for reopening a hearing on the last day of the race may be delivered within the following time limit.
(a) When the competitor received the decision the day before, it shall be within the protest time limit.
(b) When the competitor received the decision on the day, it shall be within 15 minutes after the decision received.
This changes rule 66.2.
- 16.7 A request for redress based on the decision made by the protest committee shall be delivered within 15 minutes after the display of the decision on the official notice board on the last day of the race. This changes rule 62.2.

17. Scoring

- 17.1 At least 1 race is required to be completed to constitute this regatta for all classes.
Even if no race is completed due to weather condition, any extended race will not be held.
- 17.2 A boat's score for all classes will be as follows.
(a) When less than 6 races are completed, a boat's series score will be the total of her all race scores.
(b) When more than 6 races are completed, a boat's series score will be the total her race scores excluding her worst score. This changes Appendix A2.
- 17.3 A boat who breaches SI 18.1~18.5 will be scored "her final score plus 3" as "PTP" without a hearing.
However, such boat will not be scored worse than a boat scored as "DNF".
This changes rule 63.1, Appendix A4 & Appendix A5.
When the races are made continuously, penalty for breach SI 18.2 will be imposed on the first race after the breach and penalty for breaches SI 18.3 & 18.5 will be imposed on the race before the breach.
- 17.4 The number of the boat participated in each class will be determined in accordance with the list registered at the registration desk of the race office by the time of 12:00 on July 21st (Friday).
- 17.5 Scoring for Team Race competition will be made in accordance with Notice of Race.

18. [NP] Safety regulations

- 18.1 [DP] Competitor, coach or supporter shall make the check-out/check-in at the race office.
- 18.2 [DP] A check-out shall be done from 8:00 on the day by 10 minutes after the display of D flag of each

class.

18.3 A check-in shall be done no later than 60 minutes after the final race or the day completed or the race committee signals that no more race will be made, whichever is later.

The race committee chairman may extend the check-in time limit. It will be notified via "LINE".

18.4 [DP] When boats returned because of the completion of the races in the morning time or the abandonment or the postponement of the race, the check-in shall be made.

When boats will leave the harbor for the races in the afternoon time, or for the resumption of the race which was abandoned or postponed, the check-out shall be made before departure from shore in accordance with SI 18.2.

18.5 [DP] A boat who would retire from a race and a boat who would not compete in the next race shall keep away from the racing area and shall notify his/ her intension to a nearest race committee boat or the race office and the declaration of the retire and the reason shall be made at the race office.

18.6 [DP] Every Optimist Dinghy Beginners' Class boat is requested to put "the recognizable ribbon" distributed by the race committee at the peak of the sprit.

18.7 The race committee may rescue a competitor if they cannot get any response to their inquiry for the intension of him/her whether he/she will continue the race or retire from the race, when they judge he/she is in danger and unable to decide anything himself/herself because of fatigue after they recommend the retiring from the race. This will not be ground for a protest by a boat. This changes rule 62.1(a).

19. Replacement of equipment

19.1 [DP] A boat who would substitute any damaged or lost equipment shall obtain the permission from the technical committee as soon as possible.

19.2 There will be the case to carry the measurement or inspection at any time during the regatta in order to confirm whether a boat or any equipment agrees with the class rules, the Notice of Race or SI. The technical committee may instruct a boat to go to the designated area for the inspection.

20. [NP] Official boats

Official boats of the race committee will display the following flags.

Name of the official boat	Indication	Flag color
The race committee signal boat	JJYU flag	Blue
The race committee boat	RC	White
The protest committee boat	JURY	Red
The rescue boat	RESCUE	White
The transport boat	RC	Green

21. [DP] Support boats

21.1 Any club wishes to bring in the support boat to the regatta shall apply with the designated application form for the entry according to Notice of Race, writing the necessary matters on the form.

- 21.2 The support boat shall hoist the pink flag which will be lent from the regatta secretariat at the time of the entry.
- 21.3 The number of the crew on board a support boat is required to be less than a half of her capacity. Also, the number shall be the one to avoid close contact with each other.
- 21.4 A support boat shall keep away from the racing area from the time of the warning signal for the first race of the first class to start until all boats have finished.
- 21.5 A support boat may supply any foods and drink for the competitors outside the racing area after the boat finishes and before the next warning signal if the race will be made continuously. However, unless the race committee requests to do so, a support boat shall not supply/receive any other materials to/from the competitors and shall not give any assistance such as towing a boat.
- 21.6 A support boat may be requested to help rescue operation and, in such case, the race committee signal boat will display pink color flag with the consecutive short sounds. In this case, SI 21.4 & 21.5 will not apply.

22. [DP] [NP] Trash disposal

Boats must not throw trash in to the sea. However, trash may be placed aboard support boats or official boats.

23. [DP] [NP] Radio communication

Except in an emergency, a boat shall neither make radio transmissions while racing nor receive radio communications not available to all boats. This restriction also applies to mobile telephones and GPS.

24. Risk Statement

Rule 3 states, "The boat is solely responsible for deciding whether to participate in the race or continue the racing. "Participation in the competition means each sailor agrees and acknowledges that sailing has inherent risks and is a potentially dangerous behavior. These risks include strong winds, rough seas and sudden modifies in weather. The risks inherent in sailing sports are the risk of serious injury that will last a lifetime or death caused by drowning, trauma, hypothermia and other causes.

Diagram-1 Racing Area

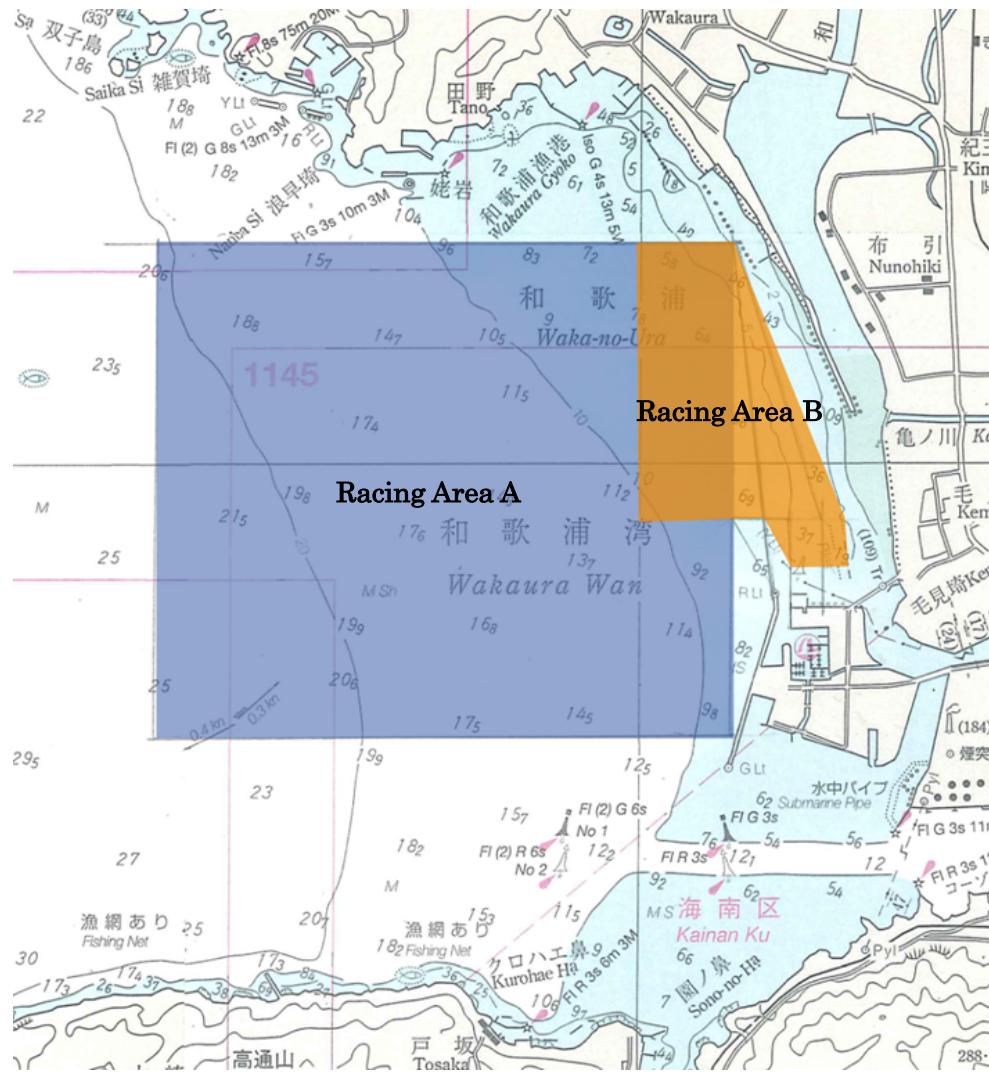


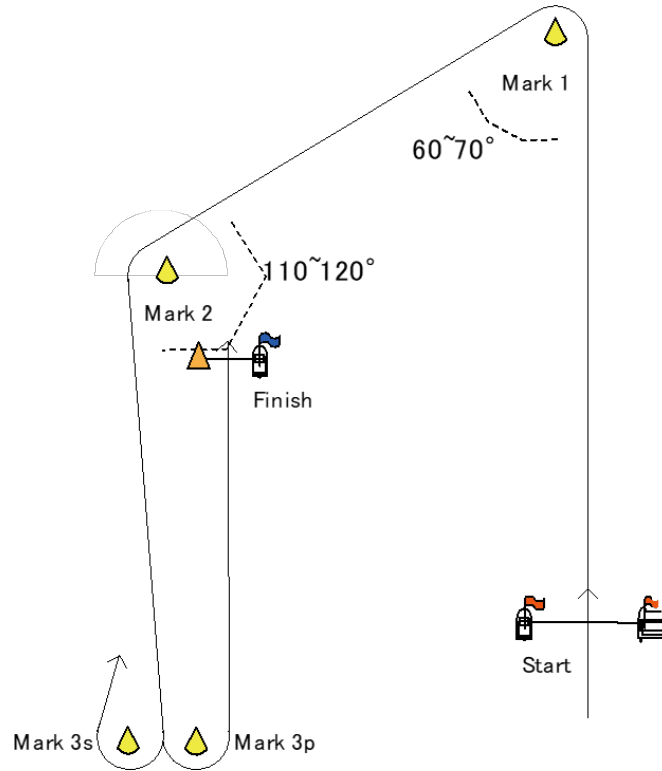
Diagram-2 Course

Racing Area A

ILCA4: Start→1→2→3S · 3P→2→3S · 3P→Finish

Optimist Dinghy Advanced Class: Start→1→2→3S · 3P→Finish

No number on Marks



Racing Area B

Optimist Dinghy Beginners' Class: Start→1→2→3→Finish

No number on Marks

