

The 34th Junior Yacht International Goodwill Tokyo Regatta Miki House Cup Tokyo 2024

Sailing Instructions (SI)

This regatta will be conducted via the Regatta LINE Open Chat system as a way to contact competitors.

Please participate in the following Miki House Cup 2024 LINE Open Chat.

Minimum 1 person per boat is requested to participate.



URL: <https://qr.paps.jp/dPQq3>

- Participants of the regatta are requested to participate in LINE Open Chat at least one week before the regatta day.
- LINE Open Chat will be used for the contact method of the notice from Organizing Authority and Race Committee to participants of the regatta or Check-out/Check-in.
- Profile Name for LINE Open Chat will be Sail Number +Full Name for competitor and Club Name +Full Name for supporter.(Example: Competitor as JPN1_Kanto Taro, Supporter as Enoshima Goro)
- Please refrain from question or inquiry through LINE.(Posted text will be deleted.)

1. Rules

1.1 The regatta will be governed by the rules as defined in the Racing Rules of Sailing 2021-2024 (hereafter as RRS).

1.2 Appendix T will apply.

1.3 The notation **【SP】** **【NP】** in all rules of this regatta means the followings.

1.3.1 **【SP】** means that Race committee may apply standard penalty without hearing.

Guidelines for the associated penalties related to these violations will be posted on the official notice board. The scoring abbreviation for a boat or board(hereafter as “boat”) that has been given a standard penalty is “SYP”.

In this case, Race committee may protest and, in such case, Protest committee may decide penalty at their discretion through hearing. This changes RRS63.1, A5 and A10.

1.3.2 **【NP】** means that breach of the rule as defined **【NP】** will not be ground for a protest by a boat
This changes RRS60.1(a).

1.4 If there is a conflict between languages, the English text will take precedence.

2. Changes of Sailing Instructions

Any change to Sailing Instructions (hereafter as Instructions) will be posted on the official notice board at least 60 minutes before the first warning signal for the race of such class on the day it will take effect.

3. Communications

3.1 Notice to competitors will be posted on the official notice board(Racing Rules of Sailing org).

The official notice board will be online only and available on the regatta website. Malfunctions will not be the ground for a boat to request redress.

URL of the regatta official notice board : <https://www.racingrulesofsailing.org/documents/9611/event>

3.2 Communication with competitors

Information will be provided to competitors and supporters via LINE Open Chat.

However, this development is for reference only and everyone is requested to check the official notice board for official information.

(We will not allow the post via LINE Open Chat from competitors and supporters.)

3.3 Race committee will make notice to competitors at sea via VHF radio. VHF channel will be 72ch.

3.4 Except in an emergency or except in the case that equipment provided by Race committee is used, a boat shall neither make radio transmissions while racing nor receiving radio communications not available to all boats. This restriction also applies to mobile telephones.

4. Signals made ashore

4.1 Signals made ashore will be displayed at the flagpole of the race office (for Racing Area A) or at the flagpole provided nearby the waiting area (for Racing Area B).

4.2 **【DP】** D flag with one sound means that The warning signal in Racing Area A will be made not less than 30 minutes after D flag is displayed and that The warning signal in Racing Area B will be made not less than 10 minutes after D flag is displayed.

Boats may leave the shore, however any boat shall not be moved from the designated place on the shore until this signal is made.

4-3 When D flag is displayed above the class flag in Racing Area A, D flag will be applied for that class only.

This changes RRS Race Signals.

5. Schedule of regatta and races

5.1 Schedule of regatta on May 29th (Sunday)

07:30 Harbor Gate open

08:30 Opening ceremony

16:00 Prize giving ceremony

17:00 Regatta will be closed.

5.2 Schedule of races

Racing Area A

09:25 The time of the warning signal for No.1 Race of International 420 Class.

09:32 The time of the warning signal for No.1 Race of ILCA4

09:39 The time of the warning signal for No.1 Race of OP Advanced class

※The warning signal for the second race and the subsequent race will be made soon after the completion of the previous race.

※The race committee intends to make five (5) races for each class.

※When the following race is intended to be held, the race committee signal boat will display orange flag of the starting line with one sound to alert the boats at least 5 minutes before the warning signal is displayed.

※No warning signal will be made after 14:05.

Racing Area B

09:25 The time of the warning signal for No.1 Race of OP Beginners' class

※The race method will be explained by the race committee after the opening ceremony in the morning.

※The race committee intends to make races as many as possible.

※No warning signal will be made after 14:35.

5.3 Boats of OP Beginners' class are required to attach the ribbon provided by organizing authorities at the mast top.

6. The warning signal flag and Class flag.

6.1 The warning signal flag in Racing Area A will be yellow flag.

6.2 Class flags are as follows.

Racing Area A: OP Advanced class	OP class flag (Black on a white background)
International 420 Class	International 420 Class flag
ILCA4	ILCA flag(Red Laser on a yellow background)
Racing Area B: OP Beginners' class	OP class flag (Red on a white background)

6.3 Class flags in Racing Area A will be displayed before the warning signal. This changes RRS26.

7. Racing Areas

Diagram-1 shows the location of Racing Areas.

8.The courses

8.1 The courses of Diagram-2 show the course to be sailed which includes approximate angles

between the legs, the sequence of the rounding marks and the side of rounding each mark.

8.2 In Racing Area B, the race committee may instruct to change the course to be sailed depending on the weather, sea conditions and the situation of race progress. In such case, the race committee will explain to competitors on shore.

8.3 No later than the warning signal, the race committee signal boat in Racing Area A will display the approximate compass bearing of the first leg.

9. Marks

9.1 Marks or Gate Marks concerned will be as follows.

	Racing Area A	Racing Area B
Marks 1,2,3s,3p,4	OP Advance class Red conical buoys ILCA,International 420 Yellow conical buoys	Yellow slender cylindrical buoy
New Mark	Orange cylindrical buoy	None
Starting Line Mark	The race committee boat The pole displayed with orange flag	The race committee boat The pole displayed with orange flag
Inflatable Finishing Line Mark	The race committee boat Yellow slender cylindrical buoy	The race committee boat Yellow slender cylindrical buoy

10. The Start

10.1 The starting line will be between the poles displaying the orange flag or the orange banner on the course side.

10.2 **【DP】 【NP】** Boats whose warning signal have not been made shall keep away from the starting area outside of the course during the starting sequence. Such avoiding area will be 100 meters from the starting line.

10.3 A boat starting later than 4 minutes after her starting signal will be scored **DNS** (Did Not Start) without hearing.

This changes Appendix A5.1 and A5.2.

10.4 In Racing Area B, Official boats may guide competitors during starting.

11. Changing the next leg of the course and the Mark

11.1 To change the next leg of the course in Racing Area A, the race committee will (a) lay a new mark, (b) move the finishing line or (c) move the leeside mark and remove the original mark as soon as possible. In case of the next change of this new mark, this mark will be replaced with the original mark.

11.2 In Racing Area B, no change of the leg of the course will be made after the preparatory signal. This changes RRS 33.

12. The Finish

The finishing line will be between the pole displaying a blue flag on the race committee boat as the finishing mark of the one side and the finishing mark at the other side end on the course side.

13. Penalty

13.1 Appendix P will apply.

13.2 Appendix P2.3 will not apply and Appendix P2.2 is changed so that it will apply to any penalty after the second one.

14. Time limit and target time

14.1 Time limit of Mark 1, Race time limit (Refer to RRS35) and Finish Window are as follows.

Class	Time Limit	Mark 1 Time Limit	Finish Window	Target Time
OP Advanced Class	75 Minutes	25 Minutes	15Minutes	40 Minutes
OP Beginners' Class	40 Minutes	20 Minutes	10Minutes	20 Minutes
International 420	70 Minutes	25 Minutes	10Minutes	30 Minutes
ILCA4	75 Minutes	25 Minutes	10Minutes	35 Minutes

14.2 If no boat has passed Mark 1 within Mark 1 time limit, the race will be abandoned.

14.3 Failure to meet the target time will not be the ground for redress. This changes RRS62.1(a).

15. Hearing Requests

15.1 Protests and requests for redress or reopening shall be delivered with ON LINE Form in the following web site "[Hearing Request \(抗議書 \(審問リクエスト\) フォーム\)](#)" within the appropriate protest time limit

However, in case that competitor is unable to submit online, he/she may submit himself/herself such request to the protest committee.

- 15.2 The time limit of protest will be 60 minutes after the time when the last boat of each class has finished the last race of the day or the race committee has signaled that there would have no more race on that day, whichever is later.
- 15.3 The protest committee will notify to competitors to inform the hearings in which they are parties or named as witnesses within 15 minutes after the time limit of protest. Hearing will start from the notified time in the separated space of race committee office.
- 15.4 The protests from the race committee, the technical committee or the protest committee will be posted based on RRS61.1(b).
- 15.5 A list of boats that penalized for breaking RRS 42 will be notified.
- 15.6 Penalties to breach of the regatta measurement rules, class rules, Nor or SI marked as **【DP】** may be decided at the discretion of the protest committee.
If a boat fill the following web site ” [Penalty reports ペナルティー報告](#)” as a boat declares himself/herself the breach and submit before the hearing of this breach, a boat may follow the basic principles of Sportsmanship stipulated in “Sportsmanship and Rules”. However, in case that competitor is unable to submit online, he/she may submit himself/herself such report to the protest committee.
- 15.7 On the last day of race, a request for reopening a hearing shall be delivered within the following time limit
- a) If the requesting party was notified the decision on the day before, it shall be delivered within the protest time limit.
 - b) If the requesting party was notified the decision on the day, it shall be delivered within 30 minutes after the notification.
- This changes RRS66.
- 15.8 On the last day of race, a request for redress based on the decision made by the protest committee shall be delivered no later than 30 minutes after the display of the decision.
This changes RRS62.2

16. Scoring

- 16.1 At least 1 race is required to be completed to constitute this regatta.
- 16.2 If a boat considers that there may be the mistake in the scores or the series results, a boat may submit the following web site ON LINE Form, “[Scoring Inquiry \(成績照会のフォーム\)](#)” to the race committee and request the correction of the scores or the series results.
However, in case that competitor is unable to submit online, he/she may submit himself/herself such request to the race committee.
- 16.3 Series score of a boat will be the total score of all races. This changes Appendix A2.

17. 【DP】 Safety Regulations

17.1 Racing Area B

17.1.1 A boat in Racing Area B is required to put a recognizable colour ribbon of each division at the peak of the split which will be distributed at the time of the registration.

17.1.2 **【SP】** Check-out and Check-in

(a) Skipper who intends to participate in race shall sign on the “Check-out form” at the regatta office. When he/she returned the harbor and depart again, he/she shall sign again on the “Check-out form”.

(b) Skipper who returned the harbor, he/she shall sign on the “Check-in form” at the regatta office. The Check-in form will be prepared until 45 minutes after the end of the last race. However, the race committee may extend the time limit at the discretion of the race committee.

17.1.3 A boat who retired at sea shall notify the intention of the retire to the race committee before a boat leaves Racing Area as much as possible and shall sign on the “Retire report form” after a boat returned the harbor as soon as possible.

17.2 Racing Area A

17.2.1 **【SP】** Check-out, Check-in

(a) Competitors who will participate in race shall sign “Check-out form” at the regatta office. If boat will not participate in race, such competitor or supporter(representative) shall sign “DNC/RET form” at least 30 minutes before the time of the warning signal of the day.

(b) Competitors who returned to the harbour shall sign “Check-in form” at the regatta office within the time limit of the protest.

17.2.2 A boat who retired at sea shall notify the intention to the race committee before a boat leaves Racing Area as much as possible and such competitor or supporter(representative) shall sign “DNC/RET form” after a boat returned the harbor as soon as possible.

17.2.3 Boats who are not in race shall keep away from boats in race.

17.2.4 When the race committee display the flag V, all race committee boats and support boats shall rescue boats in danger as much as possible.

This changes RRS37.

18. Change of competitors and Replacement of equipment

18.1 **【DP】** Change of competitors shall not be allowed except written prior approval by the technical committee.

18.2 **【DP】** Replacement of equipment damaged or lost shall not allowed except written approval by the technical committee. The request for replacement shall be made to that committee at the earliest opportunity (However, it may be made after the end of race).

19. Measurement and Inspection of equipment

19.1 There will be the case to carry the measurement or inspection at any time during the regatta in order to confirm whether a boat or equipment agrees with the class rules, Notice of Race or Sailing Instructions.

19.2 【DP】 When a boat is instructed by the technical committee at sea, a boat shall go to the designated area for the inspection.

20. Official boats

20.1 Official boats are identified as follows.

The Race committee signal boat “ JJYU” flag

The Race committee boat “RC” flag

The Protest committee boat “JURY” flag

21. 【DP】 Support Team

21.1 Team leaders, coaches and other supporters shall keep away outside of area where boats are in race from the time of the preparatory signal for the first race of the first class to start until all boats have finished, retire or the race committee signals a postponement, general recall or abandonment.

21.2 Support boats that depart from Hayama Port shall make Check-out/in at the regatta office.

22. Trash Disposal

22.1 Trash may be placed aboard official boats or support boats.

23. Mooring

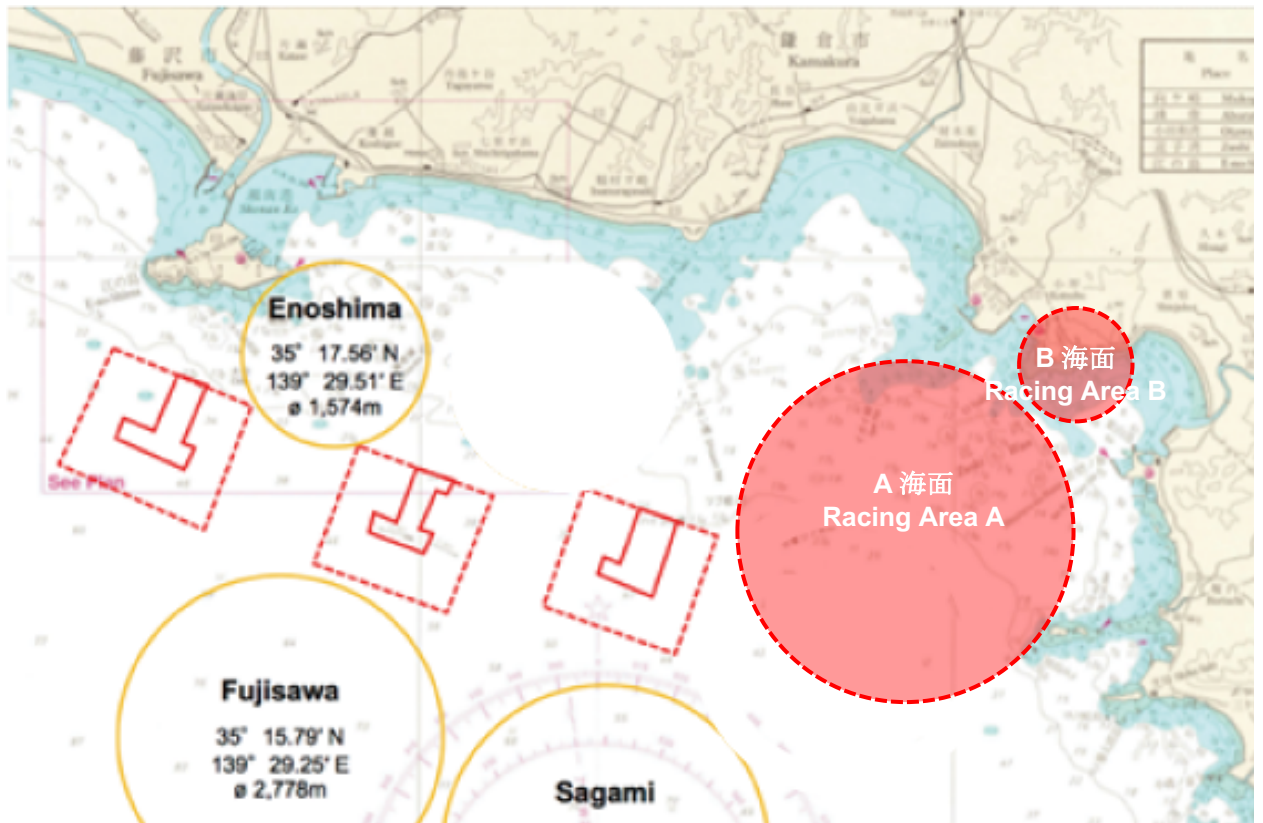
23.1 【DP】 Boats shall be kept on the designated place while boats are at the boats storage in the harbor.

24. Risk Statements

RRS 3 states, ‘The responsibility for a boat’s decision to participate in a race or to continue racing is hers alone.’

By participating in the regatta, each sailor agrees and acknowledges that sailing is an activity with inherent risks and potential danger. These risks include high winds, rough seas, sudden changes in weather conditions, equipment failure, mishandling in boat maneuvering, inexperienced maneuvering of other boats, unbalanced and unstable footing in a boat and increased risk of injury due to fatigue. Unique to the sport of sailing is the risk of serious disability that never disappears and death from drowning, psychological trauma, hypothermia and other causes.

Appendix A 図-1 レースエリア Diagram—1 RACING AREAS

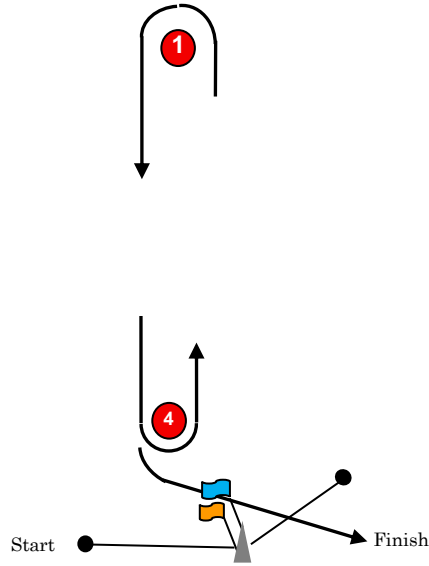


海上保安庁発行の水路図誌を使用しています。 This is a reproduction of a nautical chart published by Japan Coast Guard.

A海面

国際 420 級 International 420 Class

ILCA4



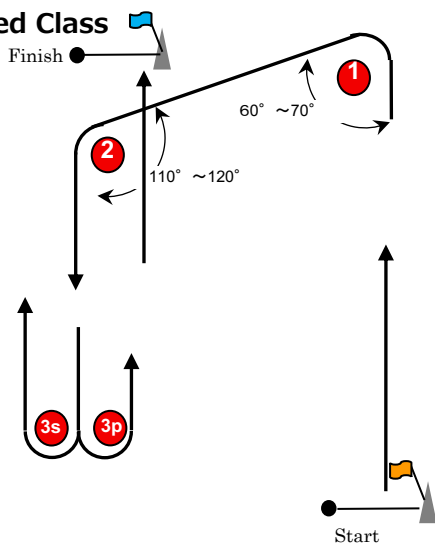
Course : Inner Trapezoid

Signal	Mark Rounding Order
LR2	Start-1-4-1-4-Finish

A海面

OP 級上級者

OP Advanced Class



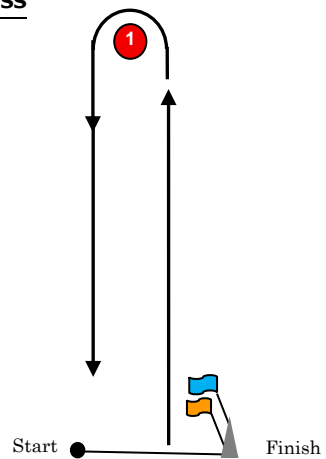
Course : Outer Trapezoid

Mark Rounding Order
Start-1-2-3s/3p-Finish

B海面

OP 級初級者

OP Beginners' Class



Course : Windward/Leeward

Mark Rounding Order
Start-1 -Finish